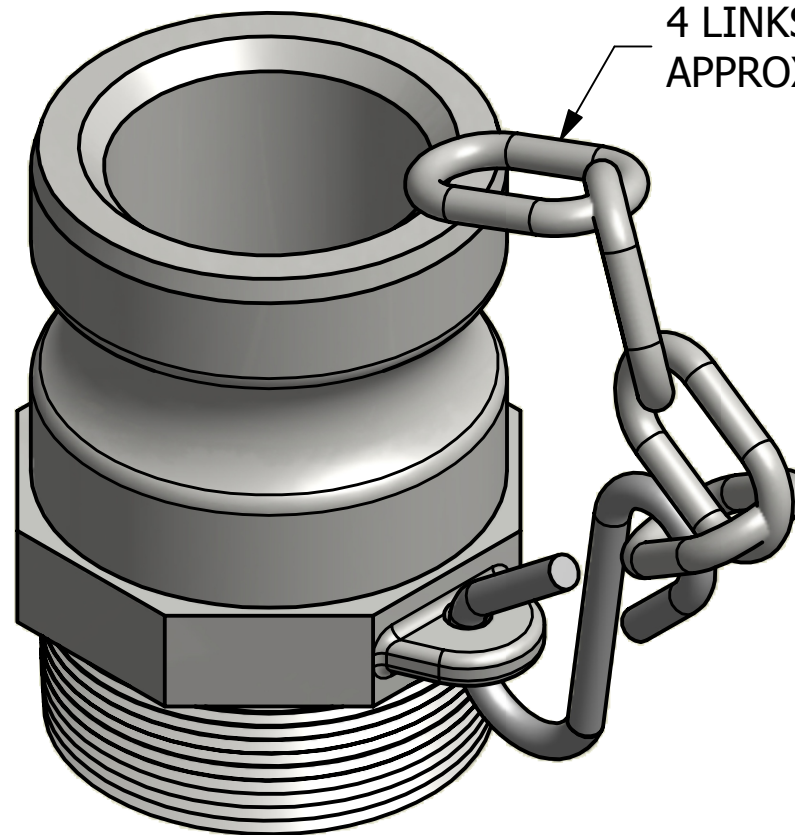
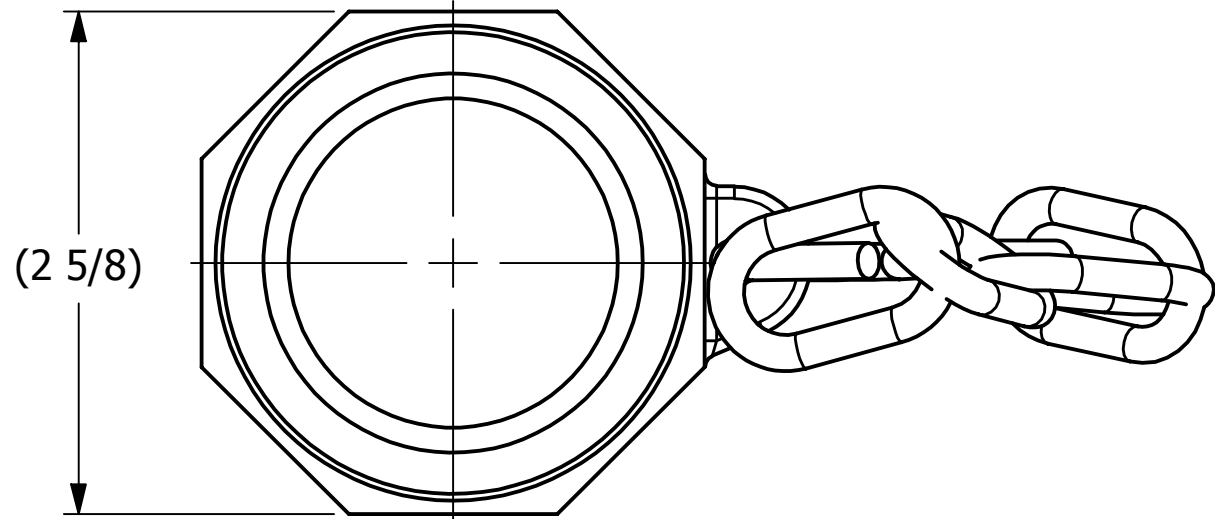


4

3

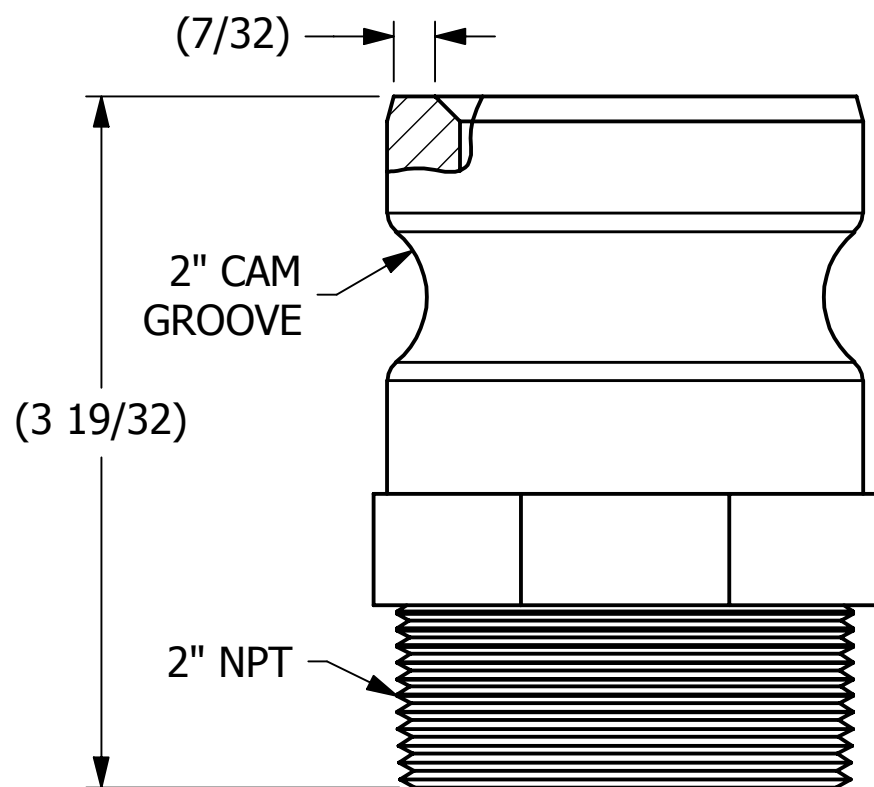
2

1



4 LINKS OF 3/16" CARBON STEEL CHAIN
APPROXIMATELY 5" IN LENGTH

ISOMETRIC VIEW



2" CAM GROOVE

2" NPT

(2 5/8)

(7/32)

(3 19/32)

SALES DRAWING

SALES DRAWING

A	JJK	10-24-14	UPDATED K2IMP
REV	BY	DATE	DESCRIPTION

<small>UNLESS OTHERWISE SPECIFIED DIMENSIONAL TOLERANCES</small> FRACTIONAL: ±1/16 X.XX: ±.03 X.XXX: ±.015 ANGULAR: ±1° <small>DEBURR ALL SHARP EDGES. ALL MACHINED SURFACES TO HAVE A 125 RMS FINISH UNLESS NOTED OTHERWISE.</small> <small>THIRD ANGLE PROJECTION</small>	DRAWN BY:	CHL
	CHECKED BY:	ACC
	PROTOTYPE BY:	CHL
	PROTOTYPE DATE:	4/10/2002
	APPROVED FOR PRODUCTION BY:	ACC
	PRODUCTION DATE:	4/10/2002

SALCO PRODUCTS, INC.		
PART NAME: QUICK CONNECT ADAPTER 2" THREAD ON		
MATERIAL: DUCTILE IRON		
PROJECT #:	SHEET #: 1 OF 1	SCALE: 1:1
DRAWING #: B16862	PART #: K2IMPA	

THIS PRINT, PROPERTY OF SALCO PRODUCTS INC., CONTAINS PROPRIETARY INFORMATION AND MUST NOT BE COPIED, REPRODUCED, OR USED DETRIMENTALLY TO OUR INTEREST.